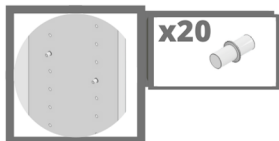
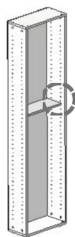
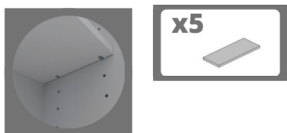
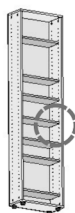


15



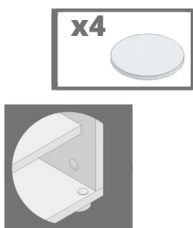
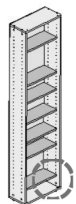
Instalar as Prateleiras na altura deseje utilizando os Pinos de aço anelado, inserindo-os nos furos (4 por prateleira) e pousando os encaixes das Prateleiras em cima deles.

16



Colar os Tapa furos para fechar os furos de instalação das portas de vidro.

17



BK01 ()BR ()TB () PORTA - 5 PRAT - 163 cm



imagens ilustrativas, podem não ser do produto exato

bürohaus[®]

bürohaus

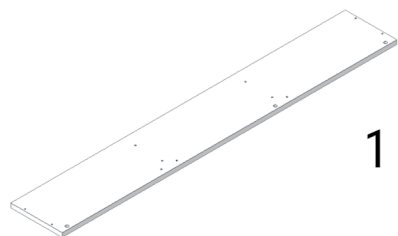
Rua das Carmelitas, 2349, Boqueirão

Curitiba - PR - 81650060

sab@burohaus.com.br

(41) 3015 - 5694

MATERIAIS

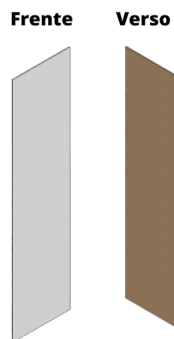


1 tampo + 1 base



2 laterais

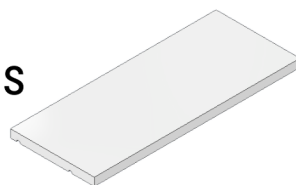
1 fundo



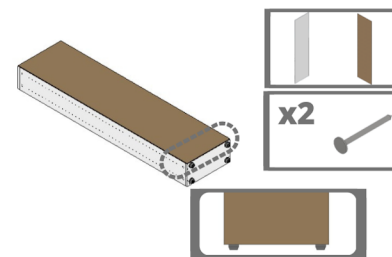
Frente

Verso

5 prateleiras

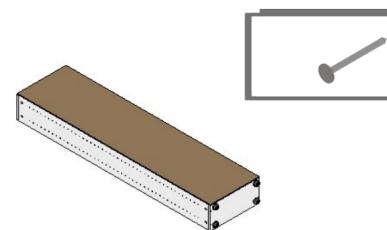


11



Colocar o Fundo fechando o quadro da estante.
Pregar somente os cantos superiores e conferir/refazer o alinhamento do Fundo.

12



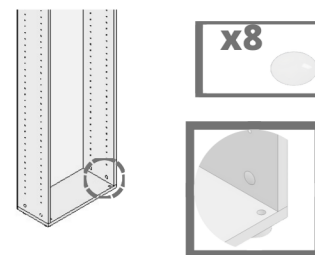
Pregar os outros Pregos, cuidando para que o alinhamento entre as bordas do fundo e da estante estejam semelhantes. A distância entre os Pregos é de aproximadamente 15 cm.

13



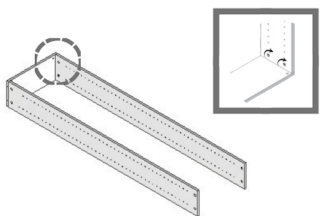
Erguer a estante e colocar ela no lugar. Cuidado ao levantar, pois as prateleiras de apoio estão soltas.

14



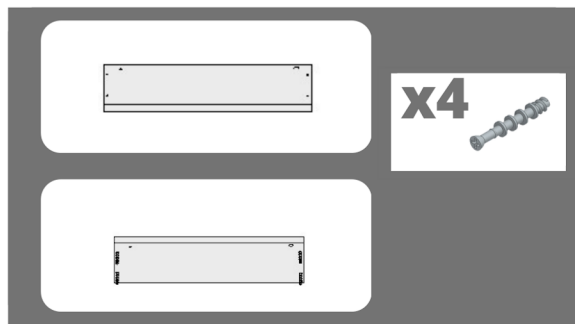
Encaixar as tampas Miniflix nos Tambores Miniflix.

7



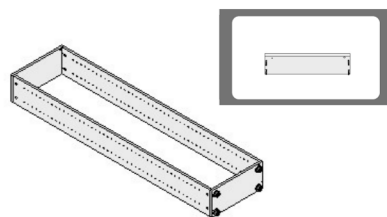
Girar os Tambores Minifix para fixar as peças na base.

8



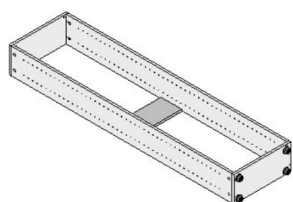
Inserir os parafusos do sistema minifix no tampo.

9



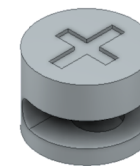
Encaixar o Tampo, também com parafusos Minifix virados para baixo, nos divisores. Apertando-os nos tambores Minifix.

10

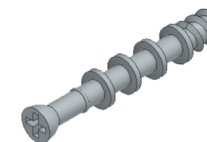


Colocar entre 1 e 3 Prateleiras deitadas dentro do corpo deitadas da estante para auxiliar na montagem do Fundo (1 a 3 Prateleiras em cada coluna).

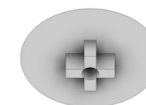
8 tambores minifix



8 parafusos minifix



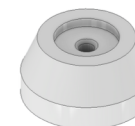
8 tampas minifix



40 pregos



4 sapatas



4 parafusos 25 mm



20 pinos prateleira



4 tapa furo

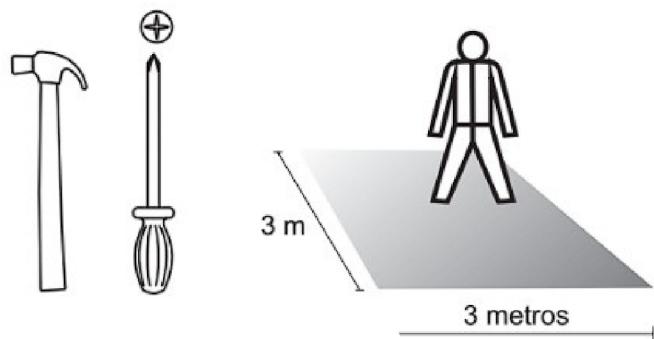


acesse o QR code ao lado para ver o vídeo auxiliar de montagem das estantes 01

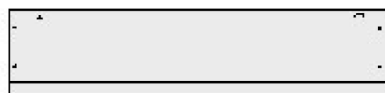


MONTAGEM

Montar deitada no chão

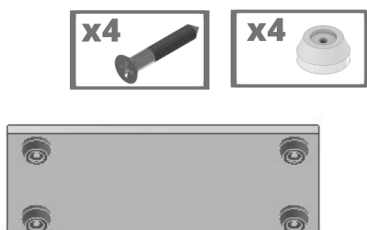


1



Pegar a Base e virar com a parte onde encaixa as Sapatas para cima.

2



Montar as Sapatas na Base utilizando o Parafuso de 25 mm nas marcações constantes na peça.

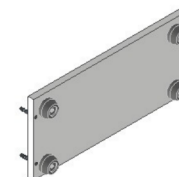
03

3



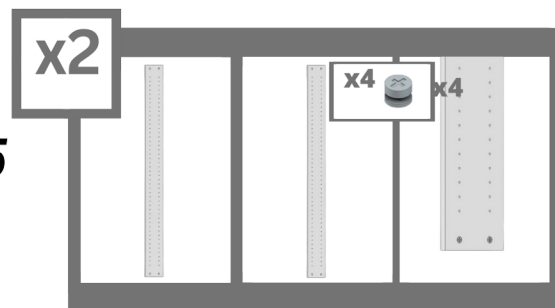
Virar a Base e parafusar os parafusos do sistema Minifix.

4



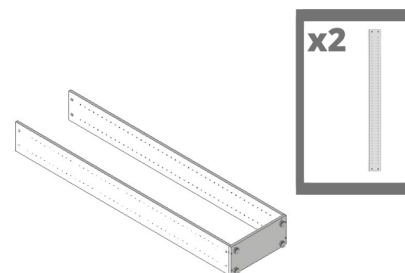
Pegar a Base e colocar ela "de lado" com a fita de borda da parte da frente virada para o chão.

5



Pegar uma lateral, colocar ela "de lado" com a fita de borda virada para o chão e encaixar os tambores Minifix nos furos, conforme a imagem.

6



Encaixar as laterais na base.

04